



Willingale Road, Loughton, IG10

BUTLER  STAG





## A newly refurbished two bedroom house in Loughton.

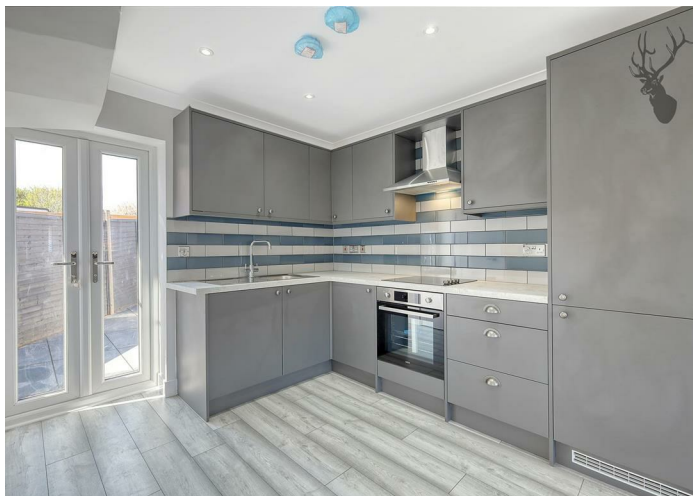


- Two Bedroom Flat
- Open Plan Living Room/Kitchen
- Family Shower Room
- Good Location
- Private Garden
- Two Parking Spaces

Internally the property offers two double bedrooms one with an en-suite, a spacious open plan living room/kitchen and a shower room. Externally there is a private rear garden. The property also has a driveway with two parking spaces

Willingale Road is ideally situated with both Debden Broadway and Central Line Station close by. Loughton is a particularly sought-after area due to its transport links and shops, with Epping Forest on the doorstep. The Central Line gives easy access to the City, Canary Wharf and West End, and for road users, the M25, M11 and routes into London are conveniently close by.

Council Tax Band B







IMPORTANT NOTICE - These particulars have been prepared in good faith and they are not intended to constitute part of an offer or contract. We have not performed a structural survey on this property and the services, appliances and specific fittings have not been tested. All photographs, measurements, floor plans and distances referred to are given as a guide and should not be relied upon.



**BUTLER & STAG**

☎ 01992 667666

🏠 4 Forest Drive, Theydon Bois, Essex, CM16 7EY

✉ [theydon@butlerandstag.com](mailto:theydon@butlerandstag.com)

[www.butlerandstag.uk](http://www.butlerandstag.uk)